



**MICROWAVE THEORY AND TECHNIQUES SOCIETY
MICROWAVE AND GUIDED WAVE LETTERS**



Dr. Roberto Sorrentino
Editor-in-chief

PLEASE REPLY TO:
Istituto di Elettronica
Università di Perugia
Via G. Duranti, 93
I-061 31 Perugia, ITALY
Tel: +39-75-585-2658
Fax: +39-75-584-7149
E-mail: mgwl@ unipg.it

June 7, 1997

REPORT TO ADCOM

1. A 20% increase of submissions has been observed from 1/1/97 through 5/31/97 with respect to the corresponding period in 1996. This partly compensates for the decrease observed last January.

We experienced a number of substantial as well as unpredictable delays in the review process because of mail service. As a consequence, we have started to use fax systematically.

Only a few manuscripts have been submitted by email.

2. Total number of articles and pages in each issue, from December 1996 through September 1997:

Months	Number of papers	Number of pages
December	6	96
January	5	36
February	6	28
March	10	44
April	5	28
May	9	36
June	9	40
July	7	32 *
August	16	68 *
September	18	76 *

* estimated

3. The following is the data regarding Page Charges made by authors in recent issues:

Issue	# of papers	# Authors charges	paying % paying
Volume 6, #12	6	1	17%
Volume 7, #1	5	0	0%
Volume 7, #2	6	2	33%
Volume 7, #3	10	6	60%
Volume 7, #4	5	4	80%



**MICROWAVE THEORY AND TECHNIQUES SOCIETY
MICROWAVE AND GUIDED WAVE LETTERS**



Dr. Roberto Sorrentino
Editor-in-chief

PLEASE REPLY TO:
Istituto di Elettronica
Università di Perugia
Via G. Duranti, 93
I-061 31 Perugia, ITALY
Tel: +39-75-585-2658
Fax: +39-75-584-7149
E-mail: mgwl@unipg.it

4. Statistics from January 1, 1997 through May 31, 1997:

1/1/97 - 5/31/97	# of papers	From Countries outside the U.S.
New papers received	110	71 [65%]
Papers Accepted	60 [58%]*	39 [58%]
Papers Rejected	44 [42%]*	28 [42%]
Papers in Review	1.5	9 [60%]

*(Percentage of total Accepted and Rejected to date)

5. Processing time for papers, from date received to date of disposition, in the period 1/1/1997 through 5/31/1997.

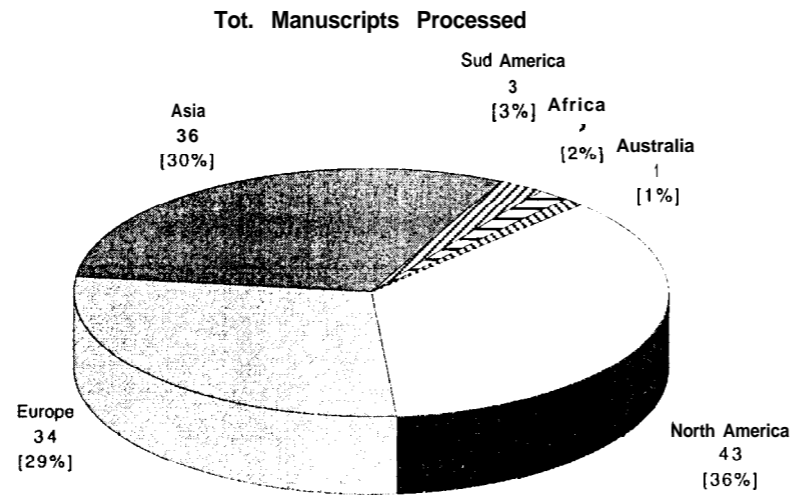
Processing times	# of papers	Percentage*
1 to 20 days	34	32.7%
21 to 30 days	42	40.4%
31 to 40 days	27	25.9%
41 to 50 days	1	1.0%
51 to 60 days	0	0.0%
Total	104	100%

*(Percentage of total papers processed)
Average processing time: 24 days

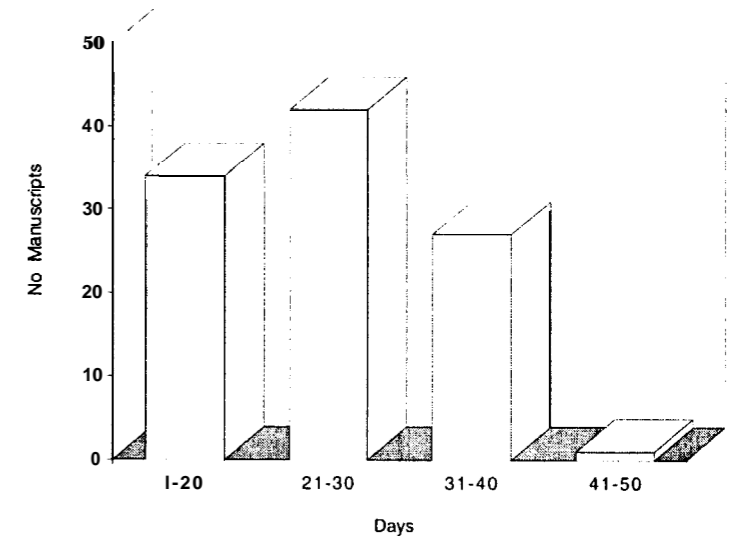
Respectfully,

Roberto Sorrentino
Editor-in-Chief

Statistics by Region:
1/1/97 - 5/31/97



Paper Processing Times
111197 - 5131197



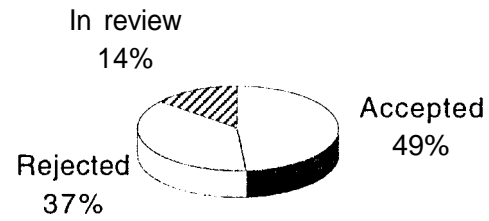


IEEE

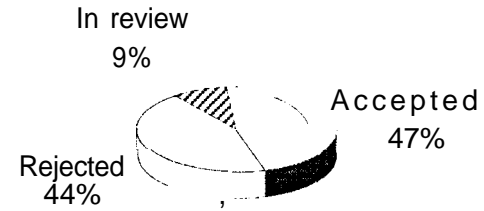


Statistics by Region:
1/1/97 - 5/31/97

North America



Europe



Asia

